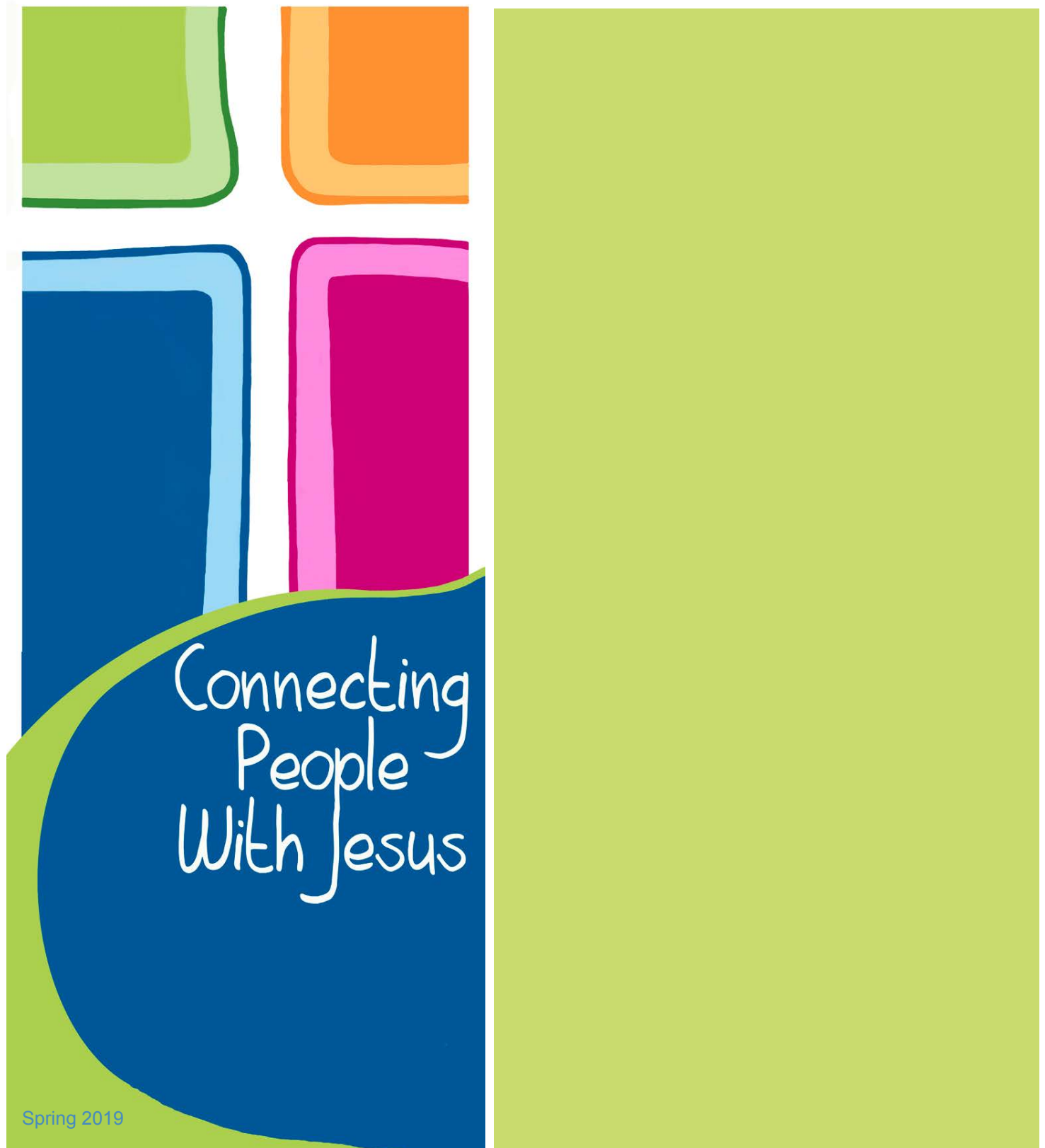


Southeastern District

The Lutheran Church–Missouri Synod



Mission Moments ... 32 million of them



My dear brothers and sisters in Christ,

Welcome to the latest edition of *Connecting With Jesus*. This magazine is written to give information, provide resource, and especially to encourage you.

Encouragement Needed? If there is ever a time that we all need a healthy dose of encouragement it would be right now. We are approaching the fifth decade of living in the 3rd largest mission field in the world. Many of the institutions that provide the shell and structure for our Christian movement are struggling. The body of Christ can feel under siege.

Remember the early days of the Christian Church in Jerusalem? The Lord was working powerfully through the apostles, but the followers of Jesus were being singled out and persecuted for their faith. Called and installed Deacon Stephen was even put to death. It was a time of great fear in Jerusalem.

What did God do to help them out? He didn't use lightning, earthquake, or flood. He sent a man whom the apostles nicknamed: Mr. Encouragement. Mr. Encouragement was God's not-so-secret weapon. His real name was Joseph, "whom the apostles call Barnabas" (which means Son of Encouragement). He was responsible for selling some land and giving it to the Church, propping the apostles up to meet converted Saul, and then went with Saul/Paul on the missionary journeys. His faith in Jesus and His Word made a huge difference.

Be encouraged as you flip through the pages, look at the pictures and read the articles and see God@work in our here and now. And, you might want to identify and say thank you to someone who is your Mr. or Ms. Encouragement today.

In the royal service of the King,
John R. Denninger, President
Southeastern District, LCMS



Planning the route to visit areas affected by Hurricane Florence. Photos courtesy of The Lutheran Church—Missouri Synod/Erik M. Lunsford.

Spring Training Videos

Spring Training for iNeighborhood is a series of videos shared on Facebook the week of May 20. These videos are of sharing ministry in the neighborhood on topics such as "The Rules of the Game," "Playing to your Strengths," and the "View from the Pitchers Mound" are posted in the SED website video library. You will find them by going to our website at se.lcms.org, click on resources and then video library. Please share these videos with those in your congregation working on neighborhood ministry and outreach



SPRING TRAINING LINE-UP

View from the Pitcher's Mound (John Denninger) Checking out the playing field, knowing who's on first, and what type of pitch – these are thoughts that go through the mind of the pitcher. Ministry in the neighborhood is much like that. During one summer break President Denninger learned that there was a real need for a Gospel presence in his neighborhood. He will share the story that gave shape to the vision of neighborhood ministry in this first Spring Training session.

Rules of the Game - (Don Schaefer) Before you play – you want to know the rules. Christ opens the playbook in the parables of the lost sheep, the lost coin, and the lost son. These stories of the Father's love for all of his children help lay the theological framework for iNeighborhood.

Playing to Your Strengths (Travis Guse) Knowing your strengths better prepares you as a member of the mission team and helps equip you to love and serve neighbors. We have each been given unique gifts that are needed to reach others. In this session, Travis will talk about the importance of knowing your strengths and developing them to help connect neighbors with Jesus.

Scouting for the Big League (Yared Halche) Join Yared as he examines the American Churches' Mission Among Ethnic Communities. This session will look at the parable of the three tenants from Matthew 25:14-30 through a missiological lens to determine faithfulness and fruitfulness in mission. He will underscore the significance of the gospel's 'investment' among others, particularly ethnes (ethnic groups). Recommendations will be given to maximize missional engagement and partnership with the global ethnes who reside in America.

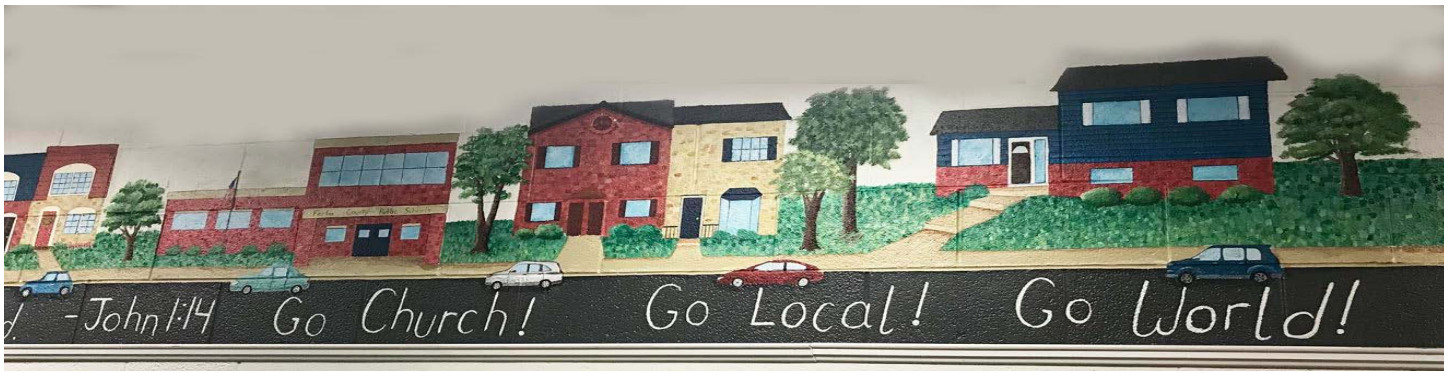
Pastor as Coach and Assistant Coach (Mark Schroeder) Leaders should feel free to take the time to invest in a few spiritually-ready individuals in the congregation for the sake of forming committed communities (e.g. iGo groups, small groups ministering outwardly, etc.). This is opposed to trying to motivate the entire congregation to engage in outreach. The Lord uses small groups throughout history to carry out His will for the nations. Mark Schroeder will give a few practical suggestions on how to form these committed communities.

The Cleanup Hitter(s) (Kirk Hymes and Sally Hiller) A week of Spring Training and now the great Lutheran question: "What does this mean?" In this week's session, Kirk and Sally will talk about putting these learnings to action. They will be sharing from the experiences of many neighborhood missionaries throughout the District.

In The Locker Room

The Southeastern District Staff will join in a panel discussion reflecting on the season before us – a season to be in the neighborhoods, connecting with people, and sharing Jesus. This is a great time to ask questions... even throw a curve ball.

Look for these
video resources
on our website at
<http://se.lcms.org>



Who is My Neighbor?

Have you stopped to consider just who your neighbor is? Would having a deeper understanding of the make-up of the community better inform ministry decisions? Would having just a little bit more information change how the church impacts the neighborhood?

The SED can help! We have two powerful tools at our disposal that provide a wealth of information, at absolutely no cost to a congregation. From big-picture demographics and long-term growth and change projections, down to providing household mailing addresses and helping identify specific homes for targeted outreach, or even to map out where congregation members live in relation to one another, the SED can help. For more information or for help with a project, please contact Ryan Radke at the SED office at (703) 971-9371, or by email at rradke@se.lcms.org



Generous donations make a difference! In March, we shared the news that the home of Heidi Gade (widow of Rev. Cliff Gade) suffered severe fire damage.

We are thankful for contributions from members of the District and that of a \$1,000 LCMS Disaster Response grant. In April, we were able to send a love offering of \$3,300 to help Mrs. Gade in replacing household items that were destroyed by the fire.

iNeighborhood
Connecting people with Jesus

Neighborhood Seeding Grants

Ever thought of a mobile neighborhood movie screen for outdoor events? What about picnic kits to help members host neighborhood gatherings? Interested in setting up a neighborhood library box or pantry exchange? How about offering multiple front-porch VBS programs this summer?

A 1-time grant of \$250 is available for congregations wanting to try something new in their neighborhood. For more information or an application, please contact Ryan Radke at (703) 971-9371 or rradke@se.lcms.org



Neighborhood Missionary Training

The Center for U.S. Missions met with congregations in Baltimore MD. Congregation leaders were trained to be iGo missionaries and will take this back to train more leaders in their churches. **Multiplication of missionary leaders!** *The priesthood goes to work!*

iGO Stories

To learn more about the following iGo stories and for contact information on each visit, iNeighborhood.org.

Redeemer Lutheran, Hyattsville MD is featured in a recent edition of *Lutherans Engaged* for their work of showing care and compassion in the neighborhood. Serving takes a variety of forms including a partnership with Lutheran Mission Society to operate a Compassion Center. To learn about the ways they are engaging people with the Gospel, look for a link on the SED iNeighborhood page.



University Christian High School, Hickory NC includes a “Beyond the Classroom Week” where students spend a week serving in the neighborhood. Last year 142 students gave more than 7200 hours of service in their community helping neighbors. It is an exciting program that helps students to see their very important role as servant leaders.



St. John's Elementary School in Dover Commissions Student Missionaries

Students at St. John's participated in a special chapel series on “BELLS,” that is learning that iGo Missionaries know how to **Bless, Eat, Listen, and Learn** as they meet their neighbors. At a Chapel in November, they were commissioned as iGo missionaries and “Sent” into their homes, neighborhoods, and classrooms to share Jesus.



SED Facilitators continue to work with congregations and circuits to prepare and equip iGo missionaries. Contact your facilitator to arrange for an iNeighborhood event in your congregation.

School Ministry



The Faces of Our Savior Lutheran School, Arlington VA

For 67 years, Our Savior Lutheran School in Arlington VA has reached out to the neighborhood through the ministry of Lutheran education. Today, the school is much more than the Kindergarten class of 1952, it serves children age 3 through eighth grade.

Reflecting the faces of the community, Our Savior School connects with families from Eritrea and of course the U.S. Their great challenge is to be able to provide scholarships so that first generation families may attend a Lutheran school where the children are able to learn about Jesus and to become the salt and light in their homes and neighborhoods. The school has been blessed with many gifts over the years, not the least of which is a group of exemplary teachers and administration. Our Savior School participates in a university-school partnership with The George Washington University's teacher education program, augmenting the professional development of its faculty and administration.

School Shepherd Award



Rev. Peter DeMik of Our Savior, Laurel MD (pictured above with Sally Hiller and President Denninger) and Rev. Justin Kumfer of Our Savior's Way, Ashburn VA received the School Shepherd Award in September for their work in bridging school and congregation as they work to connect children and families with Jesus. Congratulations!

Schools Assist in Disaster Relief



Students at **St. Stephens Lutheran School, Hickory NC**, helped sort out and package donations for disaster relief. Elementary students sorted and boxed up food. Middle schoolers loaded the truck that was delivering the 120 flood buckets, 81 boxes of food, and a supply of hygiene and school supplies.



District Board of Directors



The SED Board of Directors, 2018 – 2021

From right to left: Rev. Dr. John R. Denninger, President; Rev. Lloyd Gaines, 3rd VP – Northern Region; Rev. William Beyer, 1st VP – Southern Region; Mr. Ronald Bostick, Lay Member; Ms. Nancy Nolley, Lay Member; Ms. Elizabeth Elgert, Lay Member; Ms. Janis McDaniels, Lay Member; Rev. William Harmon, 2nd VP – Central Region; DCE Paula Weiss, Commissioned Minister; Rev. John Kassouf, Secretary; not pictured is Dr. Dina Vendetti, BOD Chair, Commissioned Minister.

New Ministry

Campus Ministry opportunities abound in our District.

Congregations located near campuses create connections with students through invitations to join the congregation in worship and events, providing transportation, and developing fellowship groups that connect students with members.

The SED has had a presence since 1967 at Gallaudet University in Washington DE through Christ Lutheran Church of the Deaf (Silver Spring MD). The University of MD, Baltimore Campus, Arbutus MD; George Mason University, Fairfax VA; University of VA, Charlottesville VA; Virginia Tech, Blacksburg VA; NC State, Raleigh NC are just a few of the 40 campuses where the SED has a mission connection.

You can check out the SED Campus Ministry connections on this interactive map on our website - <http://se.lcms.org/campus-ministry>. If you have a student attending one of these universities, send a message to the campus contact.



Disaster Response



Relief Efforts Continue

Hurricane Florence made landfall just a little more than four months ago and people are still living with the realities of recovery and rebuilding. The Southeastern District is blessed to be the recipient of more than \$200,000 in gifts from individuals, congregations, and schools as well as two grants from LCMS Disaster Response (\$209,000) and North Carolina Hurricane Florence Disaster Relief Fund (\$20,000). This has allowed us to be available to assist with immediate needs and now, to help with rebuilding.

Members from Calvary, Charleston SC chose to begin 2019 by working on a home in Burgaw NC. This home, destroyed by Hurricane Florence when a tree went through the roof, was in need of people who could help with the rebuilding process. College students from Delaware University joined Calvary members with the project. They worked through 32-degree days so that this family could find their way back home.

We are now identifying dates for rebuilding work to make it easier for volunteer work teams to sign up. We know that Camp Rockfish, Lumberton NC will be in need of teams to help with chain saw and tree debris work. Camp Rockfish is able to provide housing and to help with meals. Currently, our greatest challenge is locating housing for those who want to help. If you are interested in working on a project or bringing a team to serve, please sign up on our website at <http://se.lcms.org/compassion-story/>

Volunteers Needed

The District Website has a listing of work sites in need of volunteers.

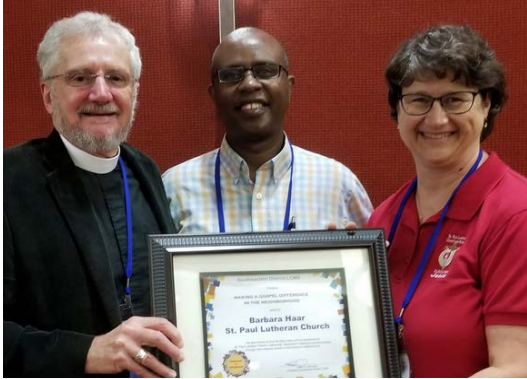
www.se.lcms.org/resources/disaster-relief



Pastor Puls @ National Disaster Conference

Pastor Wayne, Hope Lutheran Church, Wake Forest NC, shared about the SED response efforts to Hurricane Florence at the LCMS National Disaster Response Conference in St. Louis. Pastor Puls is an advocate and servant leader in Disaster Response.

Making a Gospel Difference



Don Shaefer, Yared Halche and Barb Haar

Barb Haar, Minister of Parish Life St. Paul Lutheran Church, Catonsville MD

We give thanks to God for Barb Haar and her leadership at St. Paul Lutheran Church, Catonsville MD in helping to connect people through new outreach events in the Church's neighborhood.

Redeemer Lutheran Church, Fredericksburg VA

We recognize Redeemer Lutheran Church, Fredericksburg VA with thanksgiving for the new energy that is blessing neighbors as relationships are established and the congregation is becoming the Light of Christ in the community.



From Redeemer: Stanley & Marion Dawgert with Travis Guse

Calvary Lutheran Church, Charleston SC

We praise God for the members of Calvary Lutheran Church, Charleston SC who serve neighbors in need through ministry with the blind, therapy horses, disaster response and many Gospel connections with neighbors often invisible within the community.



From Calvary: Adam Kosberg with Bill Seaman and Mark Schroeder

Comfort Dog Ministry



Meet Amos, the new Comfort Dog in our district. Amos is a two year old Golden Retriever. He is the first Comfort Dog in Virginia and is hoping to serve people all over the DC Metropolitan area.

Amos has received over 2000 hours of training and is no ordinary dog. He is able to visit people in long-term care facilities, memory care facilities, hospice care, hospitals, schools, offices and in the community. Furthermore, Amos' team includes a retired police officer and a veteran opening doors to ministry opportunities with first responders. If you're interested in having Amos visit, please email Amos@oswlc.org.

Kezia is at Emmanuel Lutheran Church in Baltimore MD. Kezia has been busy visiting local schools, her local fire station, and getting to know everyone at Emmanuel Lutheran Church and School. To contact Kezia email: rcdurham@verizon.net.

The newest Comfort Dog in the SED is Seth. He has arrived to his new home at Eternal Shepherd in SC. Contact Seth on Facebook at <https://www.facebook.com/SethComfortDog>.

Follow these dogs on Facebook by searching Comfort Dog and the name.



Interethnic Mission Initiative

Interethnic mission initiative fosters the notion of intentional engagement with Christ's mission while embracing multiple local expressions. Mission is from everywhere and to everywhere. The need for egalitarian and intentional participation in mission is, therefore, at stake.

Many of our district congregations have strong desires and commitment to share the love of Christ with various people groups. Likewise, various people groups have growing interest to work with our congregations and strengthen our common outreach ministries. More than any time before we are realizing the need for intentional participation in mission among our Anglo congregations and ethnic congregations.

Interethnic mission understanding closely aligns with the early church's missionary outlooks and practices while encouraging us to lead our present life in the light of what the future holds for the people of God. Furthermore, Interethnic mission perspective ushers a viable engagement with inter-generational mission. The church has millennial generation and second generation immigrants as both a mission field and mission partner. How can we best serve this context? As we have been doing, our district is committed to facilitate conversations and provide pertinent educational tools to enhance understanding of Interethnic mission initiative and foster collaborative mission engagement for the glory of God and His kingdom's expansion.



Final immersion and final day training with multi-ethnic PLI gathering in Hollowood Retreat Center in Maryland. So beautiful to be with people in mission!!!



Rev. Belete Belay, Galilee, Kent Island MD, celebrating Reformation.



Pastor Tekla Fogi (2nd on right) from Oromo Resurrection, Kensington MD at PLI multi-ethnic training

Prayer

Lord God, we thank you for your love so great that you would want all people to be saved and to know the fullness of your grace. We pray for the power of your Holy Spirit to change hearts and gather people into your presence. As we serve in the neighborhoods throughout the Southeastern District, we pray for 50 new congregations – places where new believers are gathering in your name, growing in grace, and following you back into the mission field. Bring about a holy harvest that as more people are connected with you, lives are transformed and your Kingdom grows. In your mighty name. Amen.

Join us in praying for these ministries that are gathering in new ways:

Lutheran Church of St. Andrew Howard County MD - Growing Community
Oromo Resurrection Outreach, Woodbridge VA
Oromo Resurrection Outreach, Kensington MD
Shepherd of the Valley Lutheran Mission, Blacksburg VA
Baltimore Muslim Ministry at Emmanuel, Catonsville/Baltimore MD
Faith and Work Enterprises, Inc., Baltimore MD
Christ Community Restart, Leesburg VA
Elshaddai Lutheran Mission, Washington DC
Vine & Branches Child Development Center, South Riding VA
Bethany Church and School relocation, Waynesboro VA
Hope Academy, Virginia Beach VA
Medihanialem Ethiopian, Washington DC
Grace Ethiopian, Springfield VA
First, Towson MD and Concordia Prep School, Baltimore MD, New Outreach



Real. Present. God., the National Youth Gathering takes place in Minneapolis this July 11-15, 2019. DCE Lamar Stewart (St Stephens, Hickory NC), is the District Coordinator for this event and is ready to answer questions about youth gatherings, transportation, what to do, raising funds, and what to expect. He is coordinating a District meal event that will be held at US Banks Stadium on Friday evening prior to the mass event. More information on this can be found on the District website.



Contact Lamar at
LQStewart@gmail.com

LCEF

In 2018, LCEF officially celebrated their 40th Anniversary of providing mission partnership with the Lutheran Church—Missouri Synod (LCMS). Its history began in 1902 when several LCMS churches pooled about \$400 together to build a new worship structure. That mission partnership continues today. LCEF is a unique ministry organization of the LCMS that offers investment opportunities to members and organizations while providing support of LCMS congregations in the form of loans and ministry support services.

When you borrow from LCEF, you build churches. When your ministry needs a loan, you need a lending partner who understands all the unique challenges churches face. LCEF applies a unique understanding of LCMS ministry and works with you to create a loan with terms that meet your ministry needs.



LCEF Meets More Than Your Loan Needs

While loans provide a key element of support, LCEF doesn't just fund projects, they partner with ministries and seek to serve in a variety of ways. LCEF has a broad offering to support your ministry. LCEF offers:

- Vision Path to help establish and focus ministry objectives.
- Capital Funding Services to assist in raising funds for building.
- Laborers for Christ to aid in keeping building costs down.
- Architectural Advisory Committee to advise on design, planning, & construction.
- Demographics to understand who your neighbors are.



The Young Investors (Y.I.) Club makes saving money fun while teaching children to give thanks for God's blessings. The Y.I. Club encourages your child to learn the value of saving, spending and sharing money while contributing to the LCEF ministry support.

Key benefits and features include:

- Minimum of \$25 to open the account
- Premium interest rates on balances up to \$1,000
- Accessible savings that grow with your child
- Checks and Visa® debit card available to custodian
- Debit card available to your child at age 16
- Interest compounded and paid monthly
- Rewards for good grades and community service

See your Congregational Advocate or visit:
<https://lcef.org/young-investors-club>



NEW LCEF Vice President

Kirk Hymes is the new LCEF Vice President for the Southeastern District. LCEF is available to support and resource you and your ministry. Kirk may be reached at the SED office at 800-637-5723.

Investment Partnerships

LCEF loans and services are made possible as LCMS congregational members invest as part of their stewardship. Thanks to a total of 60,000 investors, LCEF can provide the resources to support ministries. In 2018 we saw a net decrease in the SED investors, however, efforts are underway to attract new investor relationships with the following investment products: Young Investors Club (Y.I.C.), ConnectPLUS, PartnerPLUS and Family Emergency Steward Account®.

LCEF is a nonprofit religious organization; therefore, LCEF investments are not FDIC-insured bank deposit accounts. This is not an offer to sell investments, nor a solicitation to buy. LCEF will offer and sell its securities only in states where authorized. The offer is made solely by LCEF's Offering Circular. Investors should carefully read the Offering Circular, which more fully describes associated risks. LCEF StewardAccount@access features provided through UMB Bank n.a. Neither LCEF nor its representatives give legal, accounting or tax advice. Consult your tax advisor as to the applicability of this information to your own situation. UMB Bank serves as the custodian of the LCEF IRA/HSA. The Demand/Dedicated Certificate and StewardAccount are not available to investors in South Carolina. ConnectPLUS is not available to investors in Ohio and Pennsylvania.

Stewardship

Stewardship as a Way of Life

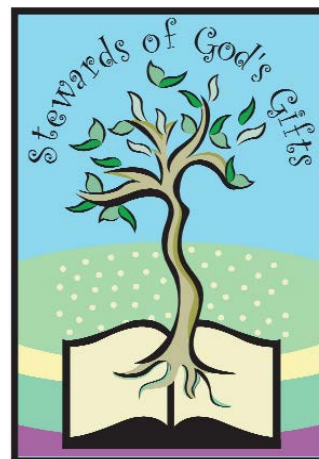
Our stewardship walk with congregations provides the opportunity to promote stewardship education opportunities that are available to ministry leaders! These partnerships provide tools to enable church leaders to promote Biblical Stewardship principles and practices, and develop an awareness of the potential of “Stewardship Outreach” to the community.

Stewardship Workshops are sponsored by the SED and LCEF. Past topics included developing a stewardship vision, best practices and pitfalls, legacy giving and endowments, time and talents, changing the Stewardship culture, and LCEF’s Consecrated Stewards program. These free workshops will be offered locally in four locations throughout the District.

LCEF’s Consecrated Stewards has been the choice of the LCMS Stewardship Department since its introduction in 2007. Consecrated Stewards has been utilized by over 60 SED congregations with an average increase in pledges of 22.8% for those congregations reporting results. For more information on Consecrated Stewards, please visit lcef.org.

Stewardship Resources

We encourage you to consider developing a “Stewardship Outreach” for your congregation and neighborhood by offering Dave Ramsey’s Financial Peace University with information and resources located at www.daveramsey.com. Additional Stewardship resources can be found at www.lcms.org/stewardship.



Mission Partnership Support

The ability for the Southeastern District to provide ministry support relies significantly on the first fruit gifts of our congregations, schools, and other ministry. We are blessed to have received the generous Mission Support gifts of \$2,414,450 in 2018. We thank you for these blessed contributions. Your gracious gifts provide for over 70% of the Southeastern District’s annual operating budget. Mission Partnership Support to the SED provides for:

- Support of iNeighborhood initiatives and outreach with resources provided to SED congregations, schools and other ministries.
- Support to traditional ministry starts and other ministries of congregations, schools, and developing ministries.
- Scholarships to students preparing to serve as pastors, teachers, and other church workers.
- Equipping workers and lay leaders.
- Support of the mission of the LCMS and ministries world wide.

We thank God for your gracious partnership in the Gospel. We pledge to be good stewards of the resources you entrust to us in our continued partnership to *connect people with Jesus*.

LCEF Advocates

The Southeastern District relies heavily on our Congregational Advocates. These are volunteers from your church who provide information and get you answers to your LCEF questions. Congregational Advocates coordinate LCEF Sundays and ensure literature and information is readily available and accessible. If you don’t know who your Congregational Advocate is, please ask your pastor or call the SED LCEF.





3 sessions of Workshops

Children's Program

Music & Worship

Visual Faith Retreat

Schedule Note:

We begin on Friday,
July 26, at 2 pm

Ending Saturday,
July 27, at 4:30 pm

**We are back in Roanoke
at the same hotelit just
has a new name**

**Blue Ridge Hotel and
Conference Center
Roanoke, VA**

Room rate is \$109.00

ROC 2019

Reaching Others for Christ Conference

July 26 & 27, 2019

Every One His Witness

ROC (Reaching Others for Christ Conference)

Joining us will be Rev. Dr. Mark Wood and Rev. Dr. Anthony (Tony) Cook
as well as workshop presentations from SED staff
and church workers in our District.

Mark Wood serves as Director of LCMS Witness & Outreach Ministry
and as Director of the LCMS Revitalization initiative. He will be **Sharing the Simple
Gospel in a Complex World.**

Tony Cook is Director of United States Ministries for Lutheran Hour Ministries (LHM).
He will be speaking on **Households of Faith.**

This year the Devotional Art portion of the conference is a Visual Faith Retreat.

We look forward to seeing you in July in Roanoke.

**As always, we will have workshops and presentations by leaders in
ministries that are making a difference, connecting people with Jesus,
and changing neighborhoods.**

**Registration fee is \$75 until June 2
\$100 June 3 - 30, Late registration is \$125
Children/Teens - \$45 Children 3 and under free**

The Conference includes

Children's Program

A VBS type program for school age children and childcare for the little ones is provided.

Visual Faith Retreat

For Bible Journaling, Praying in Color, Faithbooking and any form of Visual Faith.

Workshops and presentations by leaders in ministries who are making a difference, connecting people with Jesus,
and changing neighborhoods.

Save the date and look for information on our website in 2019 – we look forward to seeing you in Roanoke!



Calendar

2019

Spring Training Webinars

May 20 - 24, 2019 - Facebook

SED Board of Directors

June 6 – June 07, 2019 – Alexandria VA

2019 LCMS Youth Gathering

July 11 –15, 2019 – Minneapolis MN

2019 District Event at the Gathering

July 12, 2019 – Minneapolis MN

2019 LCMS National Convention

July 20 – 25, 2019

Reaching Others for Christ Conference ROC

July 26 – July 27, 2019 – Roanoke VA

New Worker Orientation

September 9 –10 , 2019 – Alexandria VA

SED Board of Directors

September 19 – 20, 2019 – Alexandria VA

SED Circuit Visitors

September 24, 2019 – Williamsburg VA

Regional Educators Conference

October 10 - 11, 2019 – Risen Christ Lutheran School,
Myrtle Beach SC

October 18, 2019 – Northern Region

Regional Professional Church Workers Conference

October 21, 2019 – South

October 22, 2019 – North

SED Board of Directors

December 5 – 6, 2019 – Alexandria VA

Servant Event Opportunities

Spring Disaster Rebuild Events

Jacksonville NC: May 13 – 18, 2019

New Bern NC: May 20 – 25, 2019

Youth Servant Events

Better Homes for Appalachia

Oakland MD

06/29/2019 – 07/06/2019

Bringing Hope to the High Country 1

Camp Linn Haven, Linville NC

06/23/2019 – 06/29/2019

Bringing Hope to the High Country 2

Camp Linn Haven, Linville NC

07/21/2019 – 07/27/2019

Thursdays @ noon

Every week on (as you can probably guess) Thursdays at noon, the SED office hosts a live-streamed conversation on a different outreach and neighborhood ministry-oriented topic. Each week, a different voice from across the District shares what is happening in their respective neighborhood. Past topics have included Partnering with African Immigrant Ministries, Devotional Art, visits from overseas missionaries, Urban Ministry, Neighborhood Small Groups, and even Wrestlemania!

You can watch the broadcast live by visiting <http://se.lcms.org/videos/> or on Facebook at <https://www.facebook.com/sedlutheran>. If you are unable to catch Thursdays@Noon live, you can watch any past Thursdays@Noon episode by visiting <http://se.lcms.org/videos/series/thursdays-at-noon-archives/>

Visit our website at se.lcms.org for more details on listed events





Southeastern District, LCMS
6315 Grovedale Drive
Alexandria VA 22310

PH: 800-637-5723
 703-971-9371

Fax: 703-922-6047

Website: se.lcms.org

Email: SED@se.lcms.org

Facebook: Southeastern District



Website: iNeighborhood.org

Email: iNeighborhood@se.lcms.org

Facebook: iNeighborhood



A Vision Update



The SED Vision Map

We currently have:

- 5 new congregations in the green zone of the graphic above
- 1,343 people in the orange zone ministry - activity in their neighborhoods
- 154 neighborhood gatherings happening
- 26 New Word communities

Our goal is that over these 9 years (2012-2021), we will have presence in 500 new neighborhoods. More recently we have wondered, begun praying, and hoping that we might see a tithe of 50 new churches these three years by the time of our next convention.



Our Prayer

Set your alarms for bold prayer at 5:17 AM/PM each day. We are praying that the congregations and people of the SED will engage 500 new neighborhoods. In addition, we are praying that we might see 50 of those engaged neighborhoods become newly chartered communities. Paul told the Thessalonians in I Thessalonians 5:17: "Pray without ceasing."

Pray without ceasing